

# STREET RACER

  
**Ubi Soft**  
ENTERTAINMENT

625 Third Street, 3rd Floor - San Francisco, CA 94107  
Technical Support Hotline : 1-800-UBI-SOFT  
Visit our website : <http://www.ubisoft.com>

PRINTED IN JAPAN

Nintendo

# GAME BOY

DMG-ASRE-USA

# STREET RACER



## INSTRUCTION BOOKLET

  
**Ubi Soft**  
ENTERTAINMENT

**WARNING: PLEASE READ THE ENCLOSED CONSUMER INFORMATION AND PRECAUTIONS BOOKLET CAREFULLY BEFORE USING YOUR NINTENDO® HARDWARE SYSTEM OR GAME PAK.**

**THIS PRODUCT HAS BEEN RATED BY THE ENTERTAINMENT SOFTWARE RATING BOARD. FOR INFORMATION ABOUT THE ESRB RATING, OR TO COMMENT ABOUT THE APPROPRIATENESS OF THE RATING, PLEASE CONTACT THE ESRB AT 1-800-771-3772.**



LICENSED BY



NINTENDO, GAME BOY AND THE OFFICIAL SEALS ARE REGISTERED TRADEMARKS OF NINTENDO OF AMERICA INC.  
© 1989 NINTENDO OF AMERICA

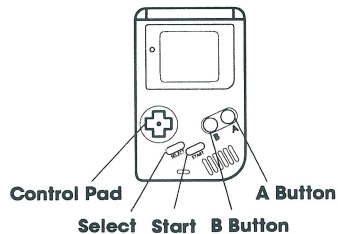


THIS OFFICIAL SEAL IS YOUR ASSURANCE THAT NINTENDO HAS APPROVED THE QUALITY OF THIS PRODUCT. ALWAYS LOOK FOR THIS SEAL WHEN BUYING GAMES AND ACCESSORIES TO ENSURE COMPLETE COMPATIBILITY. ALL NINTENDO PRODUCTS ARE LICENSED BY SALE FOR USE ONLY WITH OTHER AUTHORIZED PRODUCTS BEARING THE OFFICIAL NINTENDO SEAL OF QUALITY.

Introduction	4
Controller Operations	5
Options	6
Game Modes	6-8
Character Descriptions	9-13
Choosing Tracks	14
Obstacles	15
Bonus Points	15-16
Credits	17

Rev up and go ballistic with Street Racer! It's more than a road race, it's a whacked-out fight to the finish.

- B or A:** Accelerate
- B + Up:** Front Attack
- B + Down:** Rear Attack
- While Holding B press A:** Punch Right
- While Holding A Press B:** Punch Left
- A + Up:** Jump (Go in score mode)
- Up:** Jump
- Down:** Brake
- Left/Right:** Steering
- A + Down:** Turbo (Shoot in score mode)
- Start:** Pause/Unpause



### One and two players:

You can choose either to play a one or a two player game. You can only select a two player game if you have 2 game Boy systems, 2 games and a cable link. Please note that the 2 player option is only available in Race mode.

## Options

Here you can change and set various options; number of laps, difficulty, etc.

## Game Modes

### Practice:

This mode allows you to practice driving on all the tracks, using all the drivers or practice using the Rumble or Soccer modes.

### Head to Head:

This is a challenge mode where 1 or 2 players can compete.

1 player mode: Human vs Computer car

2 player mode: Human vs Human **(This option is only available in Race Modes and with two systems and a cable link)**

## Championship:

In this mode, you can participate in a full season of races. Ranking points are awarded for finishing positions and bonus points can also be obtained during races (see Bonus Points).

These are the default settings for various Championship Cups:

Name	Laps	Number of Tracks	Difficulty
Bronze	5 or more	6	Easy or higher
Silver	5 or more	8	Medium or higher
Gold	5 or more	10	Hard or higher
Custom	Options Settings	Up to 24	Options Settings

Once you have completed all the cups you can override the above settings from the Options Menu. When you complete a championship successfully you will get a password. You can enter these passwords in the Options menu the next time you play the game after your machine has been switched off. If you correctly enter the password you will hear a sound effect.

**Rumble:**

This is a special fighting mode where all the players are in an open arena.  
Your objective: Eliminate all your opponents from the arena!  
The last survivor is the winner.

**Soccer:**

This is a new type of soccer since you play in your car either on a field, on wood, or on ice!  
You can select from 2 choices in the options menu:

GOAL MATCH: The game is over when all the predetermined goals are scored.

TIME MATCH: The game is over when the predetermined game time is up.

**And for the best players there is also an additional bonus game to discover!**

**Choosing the Character**

The characters and their characteristics appear on the screen. In 1 and 2 player modes, you can browse through the list of characters and characteristics by pressing the left and right keys of your control pad.

**Hodja****Frank****Suzulu****Biff****Raphael****Surf****Helmut****Sumo-San**

Data of characters

<b>Name:</b>	Hodja
<b>Country:</b>	Turkey
<b>Age:</b>	As old as the hills, more than 400 years old.
<b>Car:</b>	Magic cushion with wheels
<b>Punch:</b>	Ottoman Dagger Swipe
<b>Side Attack:</b>	Electrocutes his opponents, causing them to slow down.
<b>Front Attack:</b>	Magic Carpet lets him fly over his opponents and obstacles but he must still navigate the track.

<b>Name:</b>	Frank
<b>Country:</b>	Transylvania
<b>Age:</b>	At least 100 years old
<b>Car:</b>	A big, green, low slung hot rod with lots of chrome piping.
<b>Punch:</b>	Big Monster Bash
<b>Side Attack:</b>	Ghost which scares away other players.
<b>Front Attack:</b>	Batwings which enable Frank to fly.

<b>Name:</b>	Suzulu
<b>Country:</b>	Africa
<b>Age:</b>	No one knows for sure, but we carbon-dated one of his teeth and think he's about 40.
<b>Car:</b>	Made entirely of natural products (sticks & animal skins) but can really move!
<b>Punch:</b>	Voodoo Stick Poke
<b>Side Attack:</b>	Spears come out from his tires, keeping his opponents at a distance.
<b>Front Attack:</b>	Rhino Charge causes lots of damage.

<b>Name:</b>	Biff
<b>Country:</b>	USA
<b>Age:</b>	Would you ask a guy who's big, bald and carries a bat?
<b>Car:</b>	Biff drives what he believes to be the ultimate status symbol, a blue, souped up 4WD. It handles great, but Biff's driving skills are a bit rough.
<b>Punch:</b>	A powerful swing from his baseball bat.
<b>Side Attack:</b>	Tires expand forcing his opponents to the side.
<b>Front Attack:</b>	Mighty Magnet which pulls the cars ahead of Biff backwards, allowing Biff to take the lead.

**Data of characters**

<b>Name:</b>	Raphael
<b>Country:</b>	Italy
<b>Age:</b>	23
<b>Car:</b>	Latest in Italian sportscar design. It's fast off the mark, but Raphael isn't much of a mechanic so sometimes it misfires and slows down.
<b>Punch:</b>	A quick jab.
<b>Side Attack:</b>	Loud horns which make his opponents jump.
<b>Front Attack:</b>	Gold Gobbler Magnet that pulls the leading cars backwards and propels Raphael forward.

<b>Name:</b>	Surf
<b>Country:</b>	Australia
<b>Age:</b>	Never ask a woman!
<b>Car:</b>	VW Beetle Convertible, fast, but not too quick off the mark.
<b>Punch:</b>	Beach Towel Snap
<b>Side Attack:</b>	Expanding beach balls which force her opponents off the road.
<b>Front Attack:</b>	Magnetic attraction which pulls the other cars towards her, then she punches them away and speeds forward.

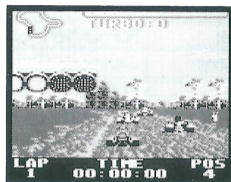
<b>Name:</b>	Hulmut Von Pointenegger
<b>Country:</b>	Germany
<b>Age:</b>	Retired
<b>Car:</b>	Helmut drives a strange mix of Red Baron tri-plane and classic Mercedes racing car. Narrow tires make handling a little difficult, but it's built like a tank and can withstand an enormous amount of damage
<b>Punch:</b>	Walking Stick Strike
<b>Side Attack:</b>	Spinning saws that come out from his tires, causing extreme damage.
<b>Front Attack:</b>	An airplane that dive-bombs into the other cars.

<b>Name:</b>	Sumo - San
<b>Country:</b>	Japan
<b>Age:</b>	Unknown
<b>Car:</b>	Sumo - San's future machine is a custom designed vehicle with treads. The treads offer superb traction and handling on almost any surface.
<b>Punch:</b>	Sumo Chop
<b>Side Attack:</b>	Sumo Splash where Sumo's car jumps up. Upon landing, he crashes down on his opponents and his treads expand, forcing his opponents off the track.
<b>Front Attack:</b>	Electric Shock which causes cars next to him to slow down.

**Choosing the Tracks:**

Each racing driver has his or her own home course. You can choose from 8 different course types with 3 different track layouts. Use left / right keys to choose your course and up/down to select your track. Press button B to view the selected track.

When you press the START button you will play the selected track (the one with the arrow pointing to it).

**Obstacles**

**MINES:** They explode instantly on impact.

**TIME BOMBS:** These can be passed to an opponent by punching or colliding with them. If you don't get rid of them, they will explode, slowing down and damaging your car.

**Bonus Points**

In RACE mode you can pick up different bonuses:

**Turbo:** Activated by pressing A + Down, it improves the car's top speed by 30% for 1 or 2 seconds. You automatically receive one each time you pass the finishing line, but you must pick up the others on the track by driving over the arrows. Your Turbo stock is displayed to the right at the top of the screen.

**Repair Kit:** The damage to your car can affect how your car performs (acceleration, top speed, maneuverability). You can repair the damage to your car by picking up repair kits on the track. The car's damage is shown by an energy bar at the top of the screen.

**Star:** The player who picks up the most stars will receive a Star Bonus at the end of a race. During the race you will get a slight speed increase for every star you pick up.

### Bonus Points:

Type		Number of Points
Fastest Lap	(Fastest lap in a race)	1
Lapping	(Lapping another car in a race)	1
Punch	(Most number of successful attacks)	1
Star	(Collecting the most stars)	1
Perfect	(Not sustaining any damage for the whole race)	2
Credit	(Not losing any credits during a full CUP)	2

### Credits

Programming: Dave Looker

Graphics: Neil Holmes

Design: Vivid Image

Music and Sound effects: Martin Walker

Project Management: Mevlut Dinc, Robert Muir, Greg Sarrail

Play Testing: Mevlut Dinc, Charlie Hasdell, Neil Holmes, Nejati Dinc

Special Thanks to: Harrison Bernardez

Producer: Mevlut Dinc

Illustration / Packaging: Julie Rault le Liard, Frederique Gaudin, Mari Sakai

Marketing: Carrie Tice, Larry Wiesler

Coordination: Alain Pakiry, Vincent Minoué

Publisher: Ubi Soft Entertainment

## **90 day Warranty**

Ubi Soft guarantees this Game Pak against any defect for a period of ninety (90) days from the date of purchase. If a manufacturing defect appears during the guarantee period, Ubi Soft will repair or replace the defective GamePak free of charge.

To take advantage of this guarantee, please return the Game Pak to Ubi Soft with the original receipt and proof of purchase. If a disk is returned without proof of purchase or after the guarantee period has expired, Ubi Soft will choose either to repair or to replace it at customer expense. This guarantee is invalid if the Pak has been damaged through negligence, accident or misuse, or if it has been modified after acquisition.



625 Third Street, 3rd Floor - San Francisco, CA 94107  
Technical Support Hotline : 1-800-UBI-SOFT  
Visit our website : <http://www.ubisoft.com>