

For questions, call  
(818) 786-6752

**90 DAY LIMITED WARRANTY**

FOR SALE AND USE IN THE USA, CANADA AND MEXICO ONLY

PRINTED IN JAPAN



HUDSON GROUP  
**HUDSON SOFT**

25 Central Way, Suite 300  
Kirkland, WA 98033

Nintendo

**GAME BOY**



**INSTRUCTION MANUAL**



HUDSON GROUP  
**HUDSON SOFT**

DMG-M8-USA-1



THANK YOU!

YOU HAVE JUST MADE THE PERFECT CHOICE BY  
SELECTING AND PURCHASING THIS QUALITY  
HUDSON SOFT PRODUCT.

Thank you for selecting "Milon's Secret Castle". In order to insure your complete enjoyment of this game, we recommend that you read the manual carefully and follow its instructions and suggestions.



Milon's Secret Castle™ is a trademark of Hudson Soft USA, Inc. Hudson Soft is a registered trademark of Hudson Soft Co., Ltd. Nintendo, Game Boy and the official seals are registered trademarks of Nintendo of America Inc. © 1992 Hudson Soft USA, Inc. All rights reserved. Made in Japan.



NINTENDO, GAME BOY  
AND THE OFFICIAL SEALS  
ARE TRADEMARKS OF  
NINTENDO OF AMERICA INC.



THIS OFFICIAL SEAL IS YOUR ASSURANCE THAT NINTENDO HAS APPROVED THE QUALITY OF THIS PRODUCT. ALWAYS LOOK FOR THIS SEAL WHEN BUYING GAMES AND ACCESSORIES TO ENSURE COMPLETE COMPATIBILITY WITH YOUR GAME BOY SYSTEM. ALL NINTENDO PRODUCTS ARE LICENSED BY SALE FOR USE ONLY WITH OTHER AUTHORIZED PRODUCTS BEARING THE OFFICIAL NINTENDO SEAL OF QUALITY.



## WARNING

- Because this is a precision tool device, do not use or store it in extreme temperature. Avoid hard shocks.
- Avoid soiling the connectors terminals by handling or spilling liquids. Soiled connectors can cause system break down.
- Do not clean this device with alcohol, thinner, benzene, or other volatile substances.
- Always turn the power off before inserting or removing Game Pak from the main system.
- When engaged in prolonged periods of game playing, we recommend that you rest 10 or 20 minutes every two hours, to avoid strain in your vision.
- Store the Game Pak in its protective case when not in use.

## A D V I S O R Y

A very small portion of the population may experience epileptic seizures when viewing certain kinds of flashing lights or patterns that are commonly present in our daily environment. These persons may experience seizures while watching some kinds of television pictures or playing certain video games including games played on the Game Boy Compact Video Game System. Players who have not had any previous seizures may nonetheless have an undetected epileptic condition. Consult your physician before playing video games if you have any epileptic condition. Consult your physician if you experience any of the following symptoms while playing video games: altered vision, muscle twitching, other involuntary movements, loss of awareness of your surroundings, mental confusion and / or convulsions.





## TABLE OF CONTENTS

Warning .....	3
Once Upon A Castle .....	5
Game Objective .....	6
Controlling Milon .....	7
Into the Secret Castle .....	8-9
About Milon .....	10-11
Wizard Barnaby's Item Shop .....	12
Boss Hideouts .....	13
Bonus Stages .....	14
Special Items .....	15-16
For Frustrated Players Only .....	17-19
90 Day Limited Warranty .....	20
Passwords .....	21



## ONCE UPON A CASTLE

The land of Hudson is populated by people who communicate to each other only through music. Young Milon, however, is unable to speak this language. Before he begins his search for musical knowledge, he must bid farewell to Queen Eliza who lives in the Secret Castle.

Milon arrives at the castle and views the remains of a terrible battle. The evil Warlord from the northern mountains brought his army of demons and conquered the Secret Castle. Queen Eliza is held captive within the fortress by the Warlord and his demons.

Barnaby, the castle wizard asks Milon for his help. "Although things look difficult, there is hope! Queen Eliza has hidden many magical instruments, tools and items within the castle for anyone brave enough to rescue her." When Milon volunteers to battle the Warlord and his minions, Barnaby gives him his first item - a magic bubble that dissolves demons and reveals hidden objects! With this, Milon sets off for the adventure of a lifetime!

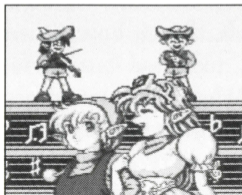




## GAME OBJECTIVE

Your objective as Milon has four parts:

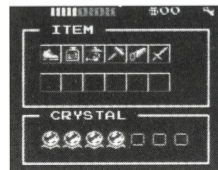
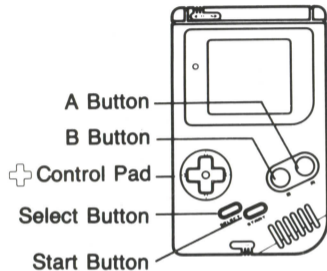
1. Solve the puzzles presented in each room of the castle.
2. Find and save the hidden money and 12 helpful items.
3. Destroy each of the demon-monsters that guard the seven magic crystal balls. The crystal balls are the keys to advancing to the next level of play.
4. After completing the above, you must find two special items to rescue Queen Eliza.



## CONTROLLING MILON

Control Pad Functions:

- Left or Right:* Moves Milon to the left or right.
- Up:* Press to enter through doors and windows.
- Down:* Press (with B Button) to fire bubbles down.
- A Button:* Press to jump.
- B Button:* Press to fire bubbles.
- Start Button:* Pauses the game.
- Select Button:* Pauses game and shows status screen.



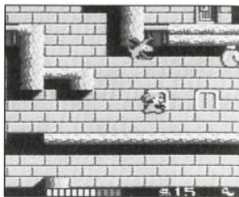


## INTO THE SECRET CASTLE

"If you cannot proceed to the next level, you probably missed something along the way." - Wizard Barnaby

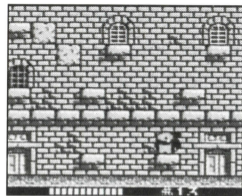
Barnaby's advice sets the tone for the game play. Milon has an enormous task ahead of him, and not many clues for help. Later in this manual is a section "*For Frustrated Players Only*", which outlines a few helpful hints, but you will find a greater degree of satisfaction, however, if you can complete this game without looking there.

The Secret Castle has three types of rooms: Mazes, Item Shops and Boss hideouts. The largest and most difficult are the Maze Rooms. These rooms have multiple challenges - traps, demon warriors, hidden doors, secret passageways, coins and at least one special item (also hidden). You need to find a key to exit each Maze room. Some are found only after dispatching a number of enemies.

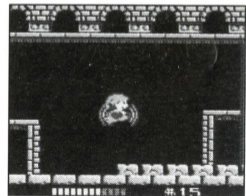


## INTO THE SECRET CASTLE, CONT.

Items Shops are hidden throughout the game. When you locate one, you'll be able to buy items and obtain valuable hints from Wizard Barnaby. Collect as many coins as possible before entering a shop. Some of the items are expensive!



The Boss hideouts feature the top henchmen of The Warlord. Defeat them and collect a crystal ball and a new route through the castle.





## ABOUT MILON

**Energy:** The marks at the bottom left section of the game screen is Milon's energy level. He loses energy if he touches an enemy character or is hit by an enemy's missile. If you lose all of the energy, the game is over. Collect hearts that appear after defeating certain demon characters to build up your energy level.

**Weapons:** The energy bubbles that Wizard Barnaby gives Milon has many uses. They dissolve demons, open hidden passages and uncover coins that are hidden in stones. Several items enhance the power of the bubbles to give Milon a better chance at survival.

**Hidden Items:** By shooting and breaking the stones with your bubbles, you will find many items. Among these are:

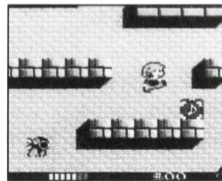
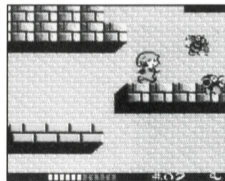
**Coin:** Save these to buy helpful items from Barnaby.



## ABOUT MILON, CONT.

**Honeycomb:** Acquire these to fill up Milon's energy and add one more bar to its level.

**Hudson Bee:** Catch the bee to earn a protective force field around Milon. This shield is temporary, but will be renewed if you keep collecting the bees.



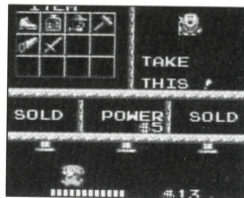
There are many Item Shops located within the Secret Castle. The upper left area shows items that have already been purchased or found by Milon. There are small pegs that Milon jumps up to press to gain information or select an item. If Milon does not have enough money to buy an item, he'll have to return to do so later.





## WIZARD BARNABY'S ITEM SHOP

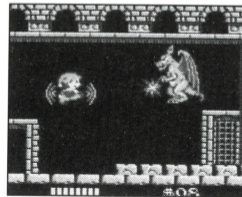
There are many Item Shops located within the Secret Castle. The upper left area shows items that have already been purchased or found by Milon. There are small pegs that Milon jumps up to press to gain information or select an item. If Milon does not have enough money to buy an item, he'll have to return to do so later.



## BOSS HIDEOUTS

When Milon enters a Boss hideout he will confront The Warlord's nastiest fighters. He must fulfill certain requirements, however, in order for the Boss to appear. Defeat the Boss to win a crystal ball and progress to the next stage of the castle. Each crystal ball enables Milon to advance to a new level.

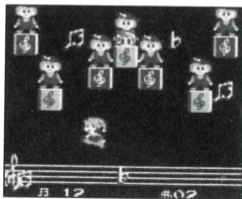
*Special Note:* To begin earning passwords you must defeat the Boss on the ground level. From then on you will earn new passwords!





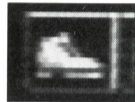
## BONUS STAGES

Find the hidden Music Boxes and jump into a special Bonus Stage! Here's where Milon learns the value of music. Each note he collects gives him a coin. Sharp notes are worth two coins, but flat notes subtract one coin from his earnings. Jump around and try to time your movements to the flow of the music. Music boxes are located when Milon "bonks" his head on the bottom of certain stones . . .

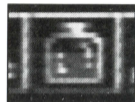


## SPECIAL ITEMS

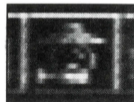
Listed below are descriptions of a few of the Special Items that Queen Eliza hid in the Secret Castle:



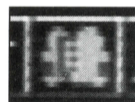
**SHOES:** Jump higher where springs are set. You'll need these to complete the first level of play.



**MEDICINE:** This allows Milon to shrink when he touches a boxing glove. Many areas require a shrunken Milon to gain access.



**LAMP:** You'll need this item to see your way in the well.



**VEST:** Don't go "into the fire" without this or you'll be burned.



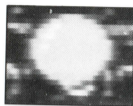
**KEY:** Collect this to leave a maze room.



## SPECIAL ITEMS, CONT.



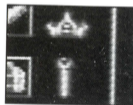
**UMBRELLA:** Destroy enemies to earn an umbrella. These allow Milon to rapid-fire his bubbles.



**BALLOON:** You'll need to grab one of these in order to escape the well. Do so by blasting the one-eyed demon.



**CRYSTAL BALLS:** Seven of these treasures are guarded by terrible demons. To save the Queen, you must retrieve them all.



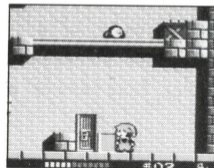
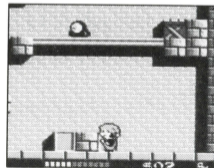
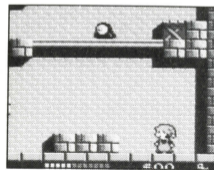
**CROWN & CANE:** Find these in order to advance to the 4th and final level of the castle.



## FOR FRUSTRATED PLAYERS ONLY

Okay, we warned you. This is not your typical action/maze game. Listed below are a few tips that may save you some time in completing the game.

1. Some things can be moved. In the first room on the lowest level, on ground level, are three stones set in a row. When Milon dissolves two of the stones to reveal two coins, this leaves the middle stone. Collect the two coins. Have Milon "push" against the remaining stone for a few seconds (Press Right or Left, depending upon which way he is facing the stone), and it will move. Back up and take a shot at the now vacant place and reveal a secret door. This is one of Barnaby's Item Shops! Several places have movable stones. See illustrations below.





## FOR FRUSTRATED PLAYERS ONLY, CONT.

2. *When in doubt, go back.* This is really the theme of the game. Keep trying everything you can think of to uncover and discover! Sometimes it's necessary to re-enter rooms to locate things that are not easily found the first time.
3. *Be prepared.* You will be allowed access to rooms that you are not totally prepared for. If you find that you keep dying in the same place, this probably applies to you.
4. *Some entrances to the castle are very secret!* Milon can enter the castle in certain places by using the hammer to bash right into a wall! Of course, you need the hammer, then experiment by pressing *Up* while Milon is on a ledge, bare piece of wall, etc.



## FOR FRUSTRATED PLAYERS ONLY, CONT.

5. *If an item seems too expensive, it may just be!* Some items are found in more than one Item Shop. If you take your time, you may find an unexpected bargain.
6. *If you really, truly can't find your way out, give us a call.* We won't laugh, honest! Our hint number is on the back of this manual.





## 90 DAY LIMITED WARRANTY

Hudson Soft USA, Inc. ("Hudson") warrants to the original purchaser of this Hudson Software product that the medium on which this computer program is recorded is free from defects in materials and workmanship for a period of (90) days from the date of purchase. This Hudson software program is sold "as is", without express or implied warranty of any kind, and Hudson is not liable for any losses or damages of any kind resulting from use of this product. Hudson agrees for a period of (90) days to either replace, at its option, free of charge, any Hudson software product, postage paid, with proof of date of purchase, at its Factory Service Center.

This warranty is not acceptable to normal wear and tear. This warranty shall be void if the defect in the Hudson software product has arisen through abuse, unreasonable use, mistreatment or neglect. THIS WARRANTY IN LIEU OF ALL OTHER WARRANTIES AND NO OTHER PRESENTATIONS OR CLAIMS OF ANY NATURE SHALL BE BINDING ON OR OBLIGATE HUDSON ANY IMPLIED WARRANTIES APPLICABLE TO THIS SOFTWARE PRODUCT, INCLUDING WARRANTIES OF MERCHANTABILITY AND FITNESS FOR A PARTICULAR PURPOSE, ARE LIMITED TO THE (90) DAY PERIOD DESCRIBED ABOVE. IN NO EVENT WILL HUDSON BE LIABLE FOR ANY SPECIAL, INCIDENTAL, OR CONSEQUENTIAL DAMAGES RESULTING FROM POSSESSION, USE OR MALFUNCTION OF THIS HUDSON SOFTWARE PRODUCT. Some states do not allow limitation as to how long an implied warranty lasts and/or exclusions or limitations of incidental or consequential damages so the above limitations and/or exclusions of liability may not apply to you. This warranty does give you specific rights, and you may also have other rights which vary from state to state.



## PASSWORDS

Write down passwords you've received so far to save for future play:

QP+KR BStH N+sdg  
 SPPKR GsXR N+sdg  
 KPPK+ hTth S+TDQ  
 K+K+ K+thh R+DQ

---



---



---



---



---





NOTES

Blank musical staff with ten horizontal lines for writing notes.



NOTES

Blank musical staff with ten horizontal lines for writing notes.

